

The Canadian Military Engineers Museum

Museum

WWW.CMIMUSEUM.CA

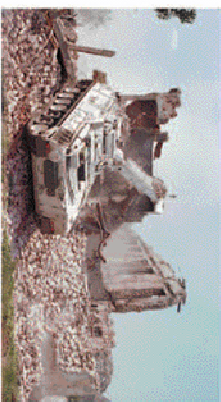
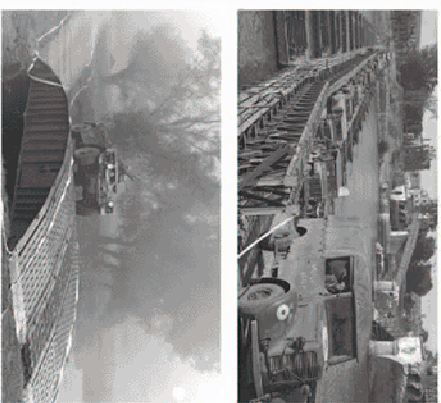


Discover our proud MILITARY history at our two

Canadian Forces Museums

OROMOCTO

N E W B R U N S W I C K



CANADIAN MILITARY ENGINEERS' MUSEUM

For over 100 years, military engineers and communicators have provided vital services to their country and comrades in time of war and peace. The newly refurbished Canadian Military Engineers Museum tells the story of the men and women who are "first in, last out" and of their vital role in the success of military and peacekeeping operations.

The History

The Canadian Military Engineers (CME) Museum first opened at CFB Chilliwack on 11 May 1987. The Museum moved to its present site, within the Canadian Forces School of Military Engineering (CFSME) which is located within the Mitchell Building at CFB Gagetown in Oromocto, New Brunswick, and officially re-opened on 01 July 1996.

The CME Museum was created to gather, collect, restore, preserve, interpret, and display materials that reflect the history of the Military Engineer

Branch and to educate Branch members of their history and to inform the public of the contributions of the Canadian Military Engineers in the development of Canada in peace and war and about our significant contributions on the world stage. With its "living museum" concept, there are tens of thousands of artifacts on display throughout the museum and within the classrooms, offices, and halls of CFSME.

The Collection

The CME Museum houses some 35,000 of the finest engineer-specific and general military artifacts in the country, illustrating the major achievements of the Canadian Military Engineers. The artifacts represent the history of all facets of the Canadian Military Engineers: from the 18th century to the present, from bulldozers to buttons, and from the Victoria Cross won by Captain Norman Mitchell during the First World War to artworks by F. H. Varley of the Group of Seven, the collection captures the identity of the Engineer Branch.



Visit Us

The CME Museum is located within the state-of-the-art Canadian Forces School of Military Engineering, Mitchell Building (J-10), Room D215, at CFB Gagetown, Oromocto, N. B. There is easy access to ample parking including accommodation for buses and R.V.'s, washrooms, vending machines, canteen, kiosk, and full handicap facilities.

The Museum is normally open from 8:00 am to 4:00 pm Monday to Friday, or by appointment. Weekend and evening visits are always welcome. Guided tours are available. Admission is free. Volunteers are always welcome to join the Friends of the Canadian Military Engineers Museum. Financial assistance and donation of artifacts will be gratefully accepted and tax receipts are available on request.

Contact Information

For more information please do not hesitate to contact the Museum Curator at (506) 422-2000 local 1897, Fax: 422-1220, Email: csm@hnb.afm.com Website: www.cmimuseum.ca

W W W . C M I M U S E U M . C A